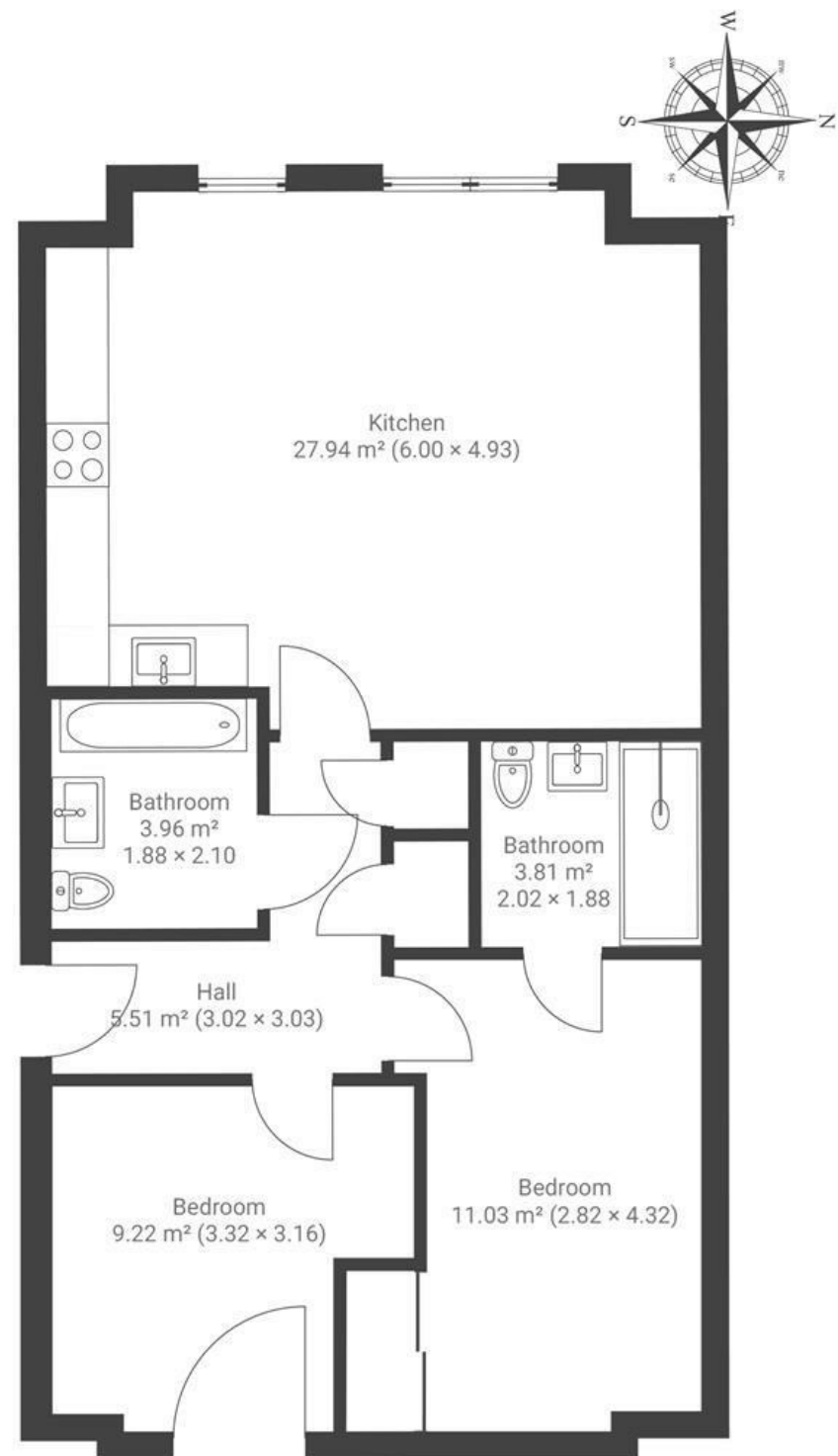


# Old Pump House Close

BEDMINSTER DOWN

APPROXIMATE FLOOR AREA  
67 SQM / 721 SQFT



Boardwalk

# Old Pump House

, BRISTOL



£280,000



2 Bedrooms



BS13 7DL



2 Bathrooms

*"We've loved living here for its fantastic location within a friendly and welcoming neighbourhood, offering a real sense of community. There's easy access to a wide range of local amenities, along with excellent connections to the city centre. Just around the corner is Zion Bristol, a popular community café serving locally sourced food and great coffee, while North Street is within easy walking distance, offering a vibrant mix of independent shops, cafés, and restaurants. The open-plan living space has been perfect for entertaining, making this a comfortable and convenient place to call home."*

